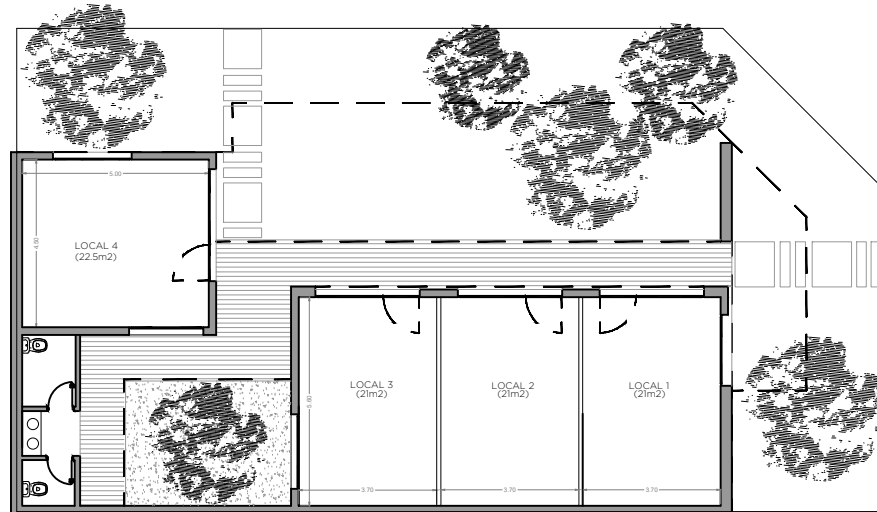


TN2
lote: 47
sup. terreno: 300.08 M2 (99m2 +5%= 105m2)
sup. construida: 104.5 m2 (sin pergolas)



TN2
lote: 48
sup. terreno: 300.08 M2 (99m2 +5%= 105m2)
sup. construida: 99 m2 (sin pergolas)



TN2
lote: 91
sup. terreno: 300.08 M2 (99m2 +5%= 105m2)
sup. construida: 105 m2 (sin pergolas)

